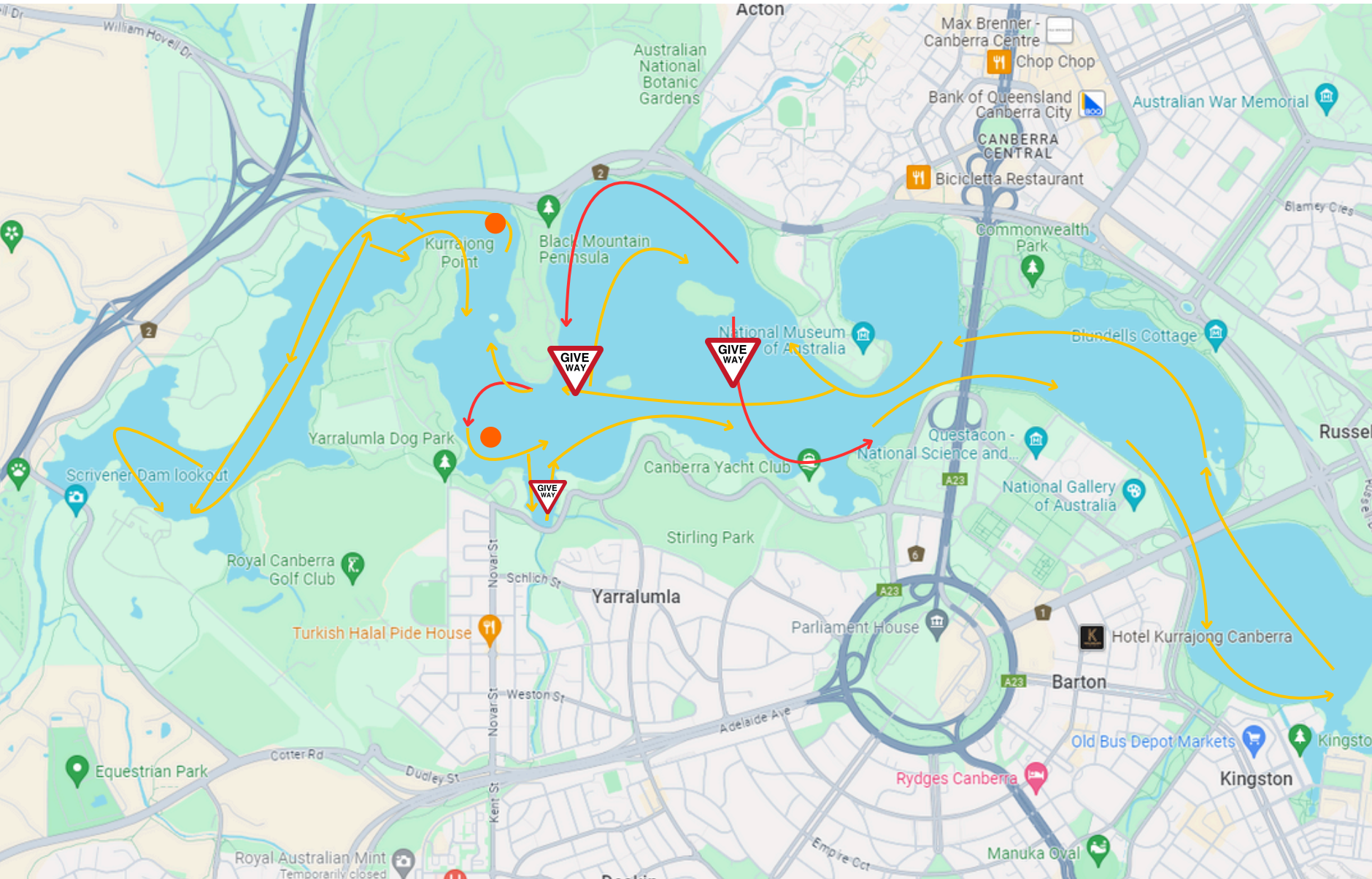
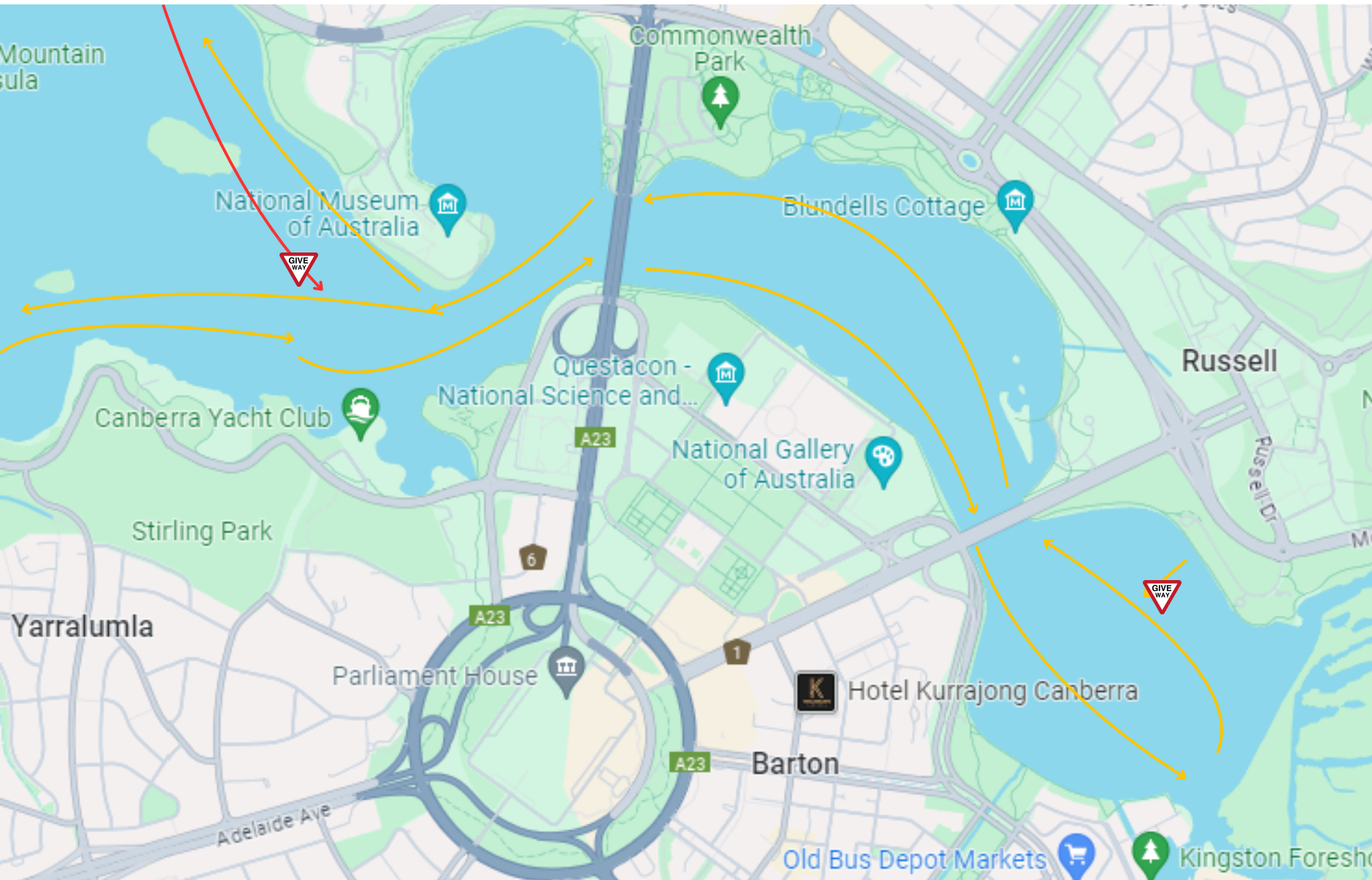


Traffic Flows and Give Way Points

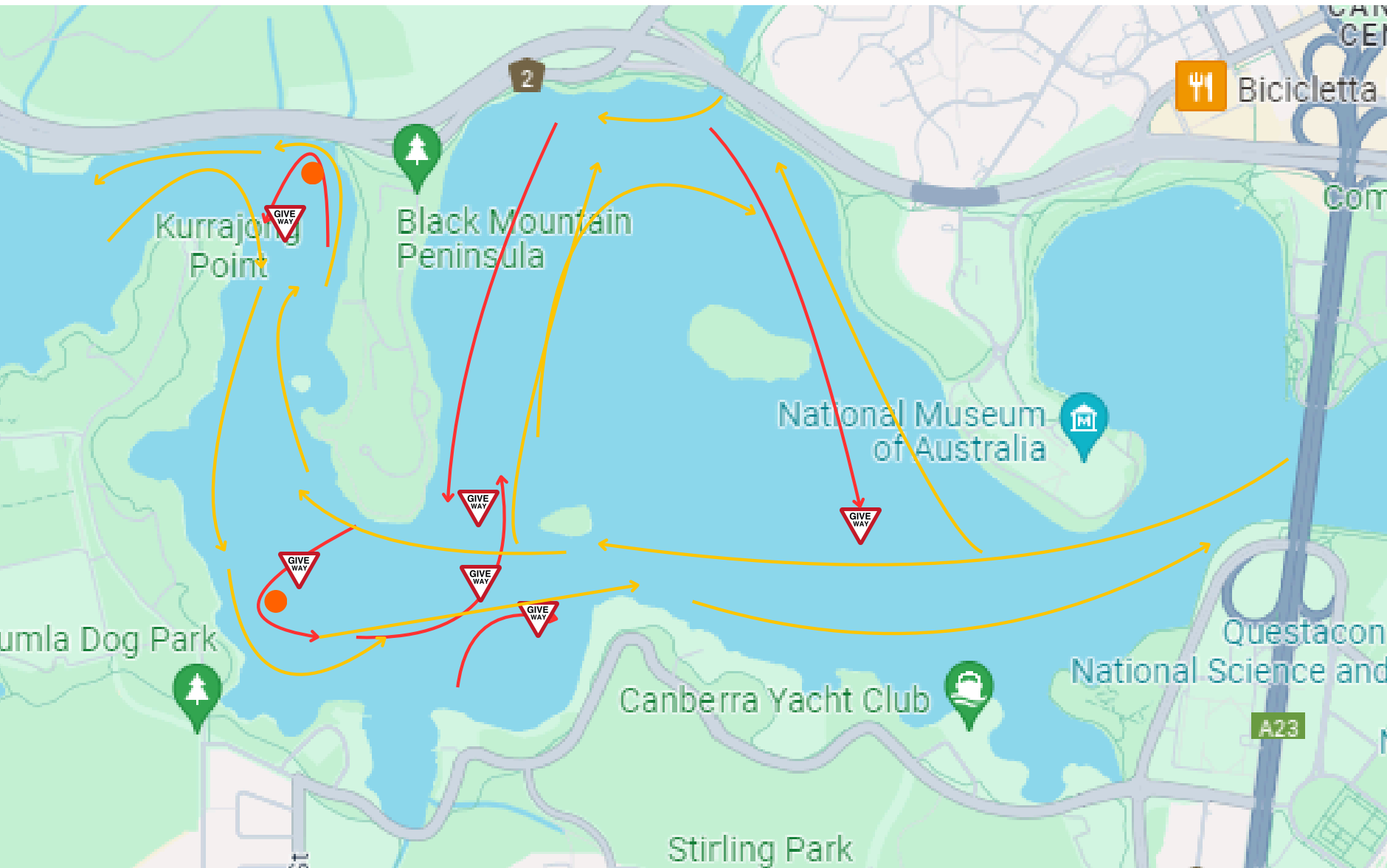


Traffic Flows and Give Way Points



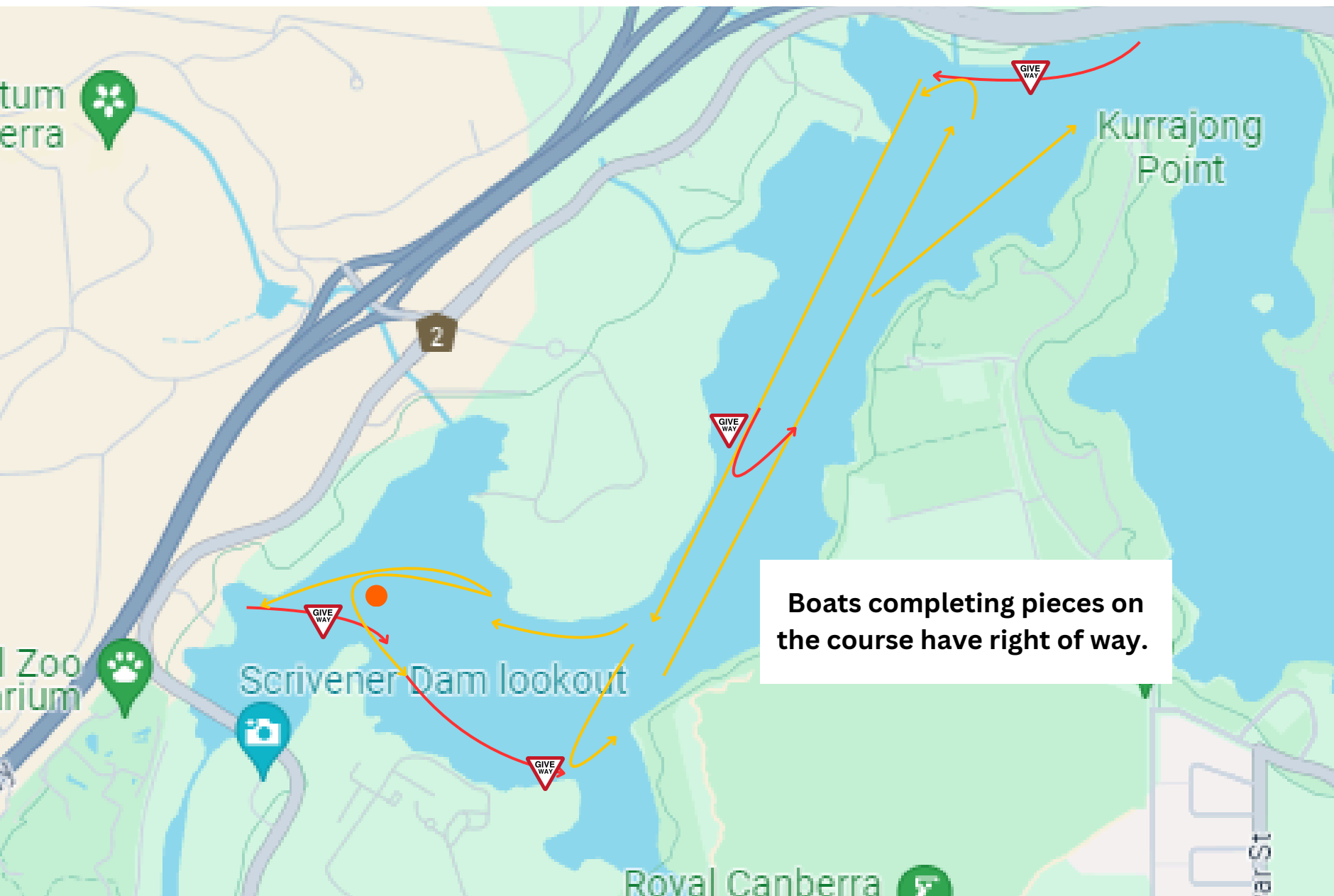
East, West and Central Basin

Traffic Flows and Give Way Points



Black Mountain Peninsula, Tarcoola Reach and ANU Bay

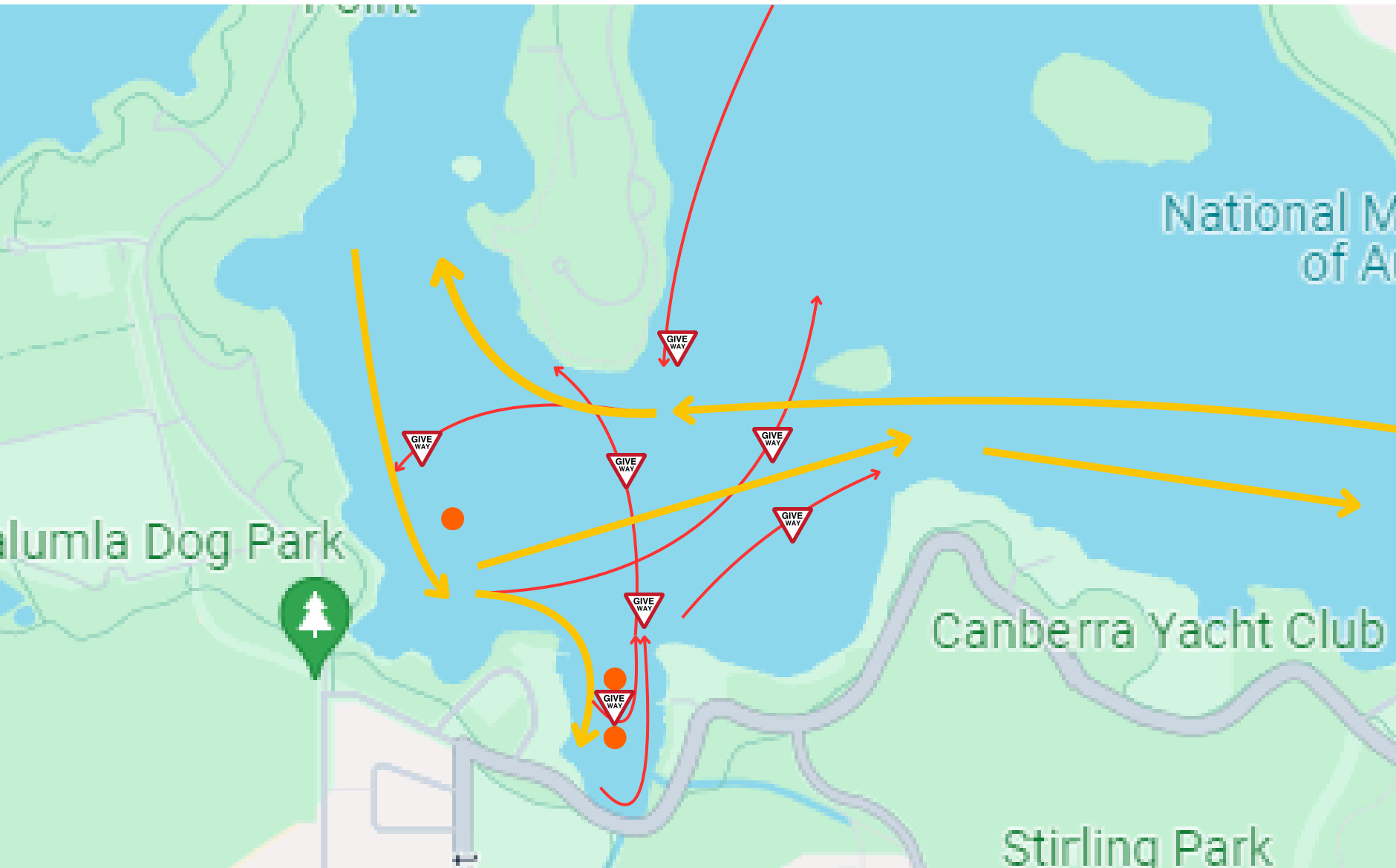
Traffic Flows and Give Way Points



Boats completing pieces on the course have right of way.

Yarramundi Reach and Scrivener Dam

Traffic Flows and Give Way Points



Yarralumla Bay